

**DWELLING UNIT COMMENCEMENTS REPORTED BY APPROVING AUTHORITIES,
NEW SOUTH WALES, NOVEMBER 1993**

NOTE: There was a break in series from November 1990. For more information, see paragraph 2 of the Explanatory Notes.

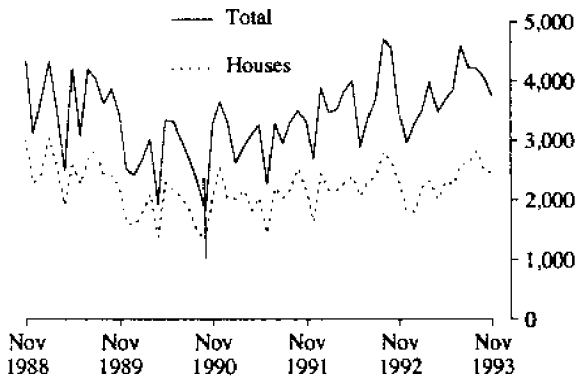
MAIN FEATURES

The total number of dwelling units commenced in New South Wales in November 1993 (3,757) was 7% lower than in the previous month (4,054) and 9% higher than in November 1992 (3,462).

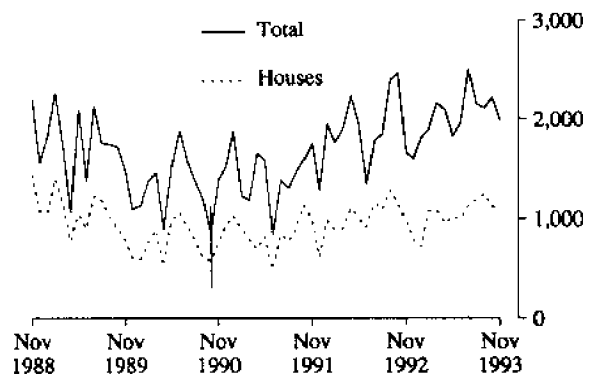
The number of houses commenced in New South Wales in November 1993 (2,450) was 1% lower than in the previous month (2,483) while for the Sydney Statistical Division the decrease was 2%.

The number of dwelling units in other residential buildings commenced in November 1993 (1,307) was 16% lower than in the previous month (1,553).

DWELLINGS COMMENCED IN NSW



DWELLINGS COMMENCED IN SYDNEY



indicates a break in series.

INQUIRIES

- for further information about statistics in this publication and the availability of related unpublished statistics, contact Geoff Howat on (02) 268 4610.
- for information about other ABS statistics and services please refer to the back of this publication.

NOTES

The statistics on dwelling unit commencements are compiled from data supplied in monthly reports provided by local and other government authorities. The statistics relate to the number of new dwelling units reported as commencements of new houses and new other residential buildings.

Explanatory notes are provided at the back of this publication.

DENIS FARRELL
Deputy Commonwealth Statistician

Unpublished data

The ABS can make available certain dwelling commencements data which are not published, such as floor area, type of other residential building, material of roof and floor, sub-LGA level data and value ranges. Where it is not practicable to provide the required information by telephone, data can be provided in the following forms:

- Photocopy
- Microfiche
- Computer printout
- Clerically extracted tabulation

A charge may be made for providing unpublished information in these forms.

For further details please telephone Geoff Howat on (02) 268 4610.

TABLE 1. DWELLING UNITS COMMENCED, NSW
(Number of dwelling units)

Period	Private sector			Public sector			Total		
	Houses	Other residential buildings	Total	Houses	Other residential buildings	Total	Houses	Other residential buildings	Total
1991-92	25,183	11,403	36,586	1,033	3,038	4,071	26,216	14,441	40,657
1992-93	26,439	14,671	41,110	739	2,700	3,439	27,178	17,371	44,549
<i>July-November—</i>									
1991-92	12,231	6,092	18,323	228	1,262	1,490	12,459	7,354	19,813
1992-93	12,623	7,012	19,635	353	883	1,236	12,976	7,877	20,871
<i>1992—</i>									
November	2,269	1,111	3,380	28	54	82	2,297	1,165	3,462
December	1,753	1,082	2,835	59	69	128	1,812	1,151	2,963
<i>1993—</i>									
January	1,733	1,363	3,096	64	104	168	1,797	1,467	3,264
February	2,124	899	3,023	89	388	477	2,213	1,287	3,500
March	2,237	1,388	3,625	84	275	359	2,321	1,663	3,984
April	1,951	1,420	3,371	50	58	108	2,001	1,478	3,479
May	2,228	1,222	3,450	89	145	234	2,317	1,367	3,684
June	2,182	1,205	3,387	76	399	475	2,258	1,604	3,862
July	2,410	1,592	4,002	189	424	613	2,599	2,016	4,615
August	2,501	1,369	3,870	121	237	358	2,622	1,606	4,228
September	2,818	1,346	4,164	4	49	53	2,822	1,395	4,217
October	2,466	1,437	3,903	17	134	151	2,483	1,553	4,034
November	2,428	1,268	3,696	22	39	61	2,450	1,307	3,757

TABLE 2. DWELLING UNITS COMMENCED IN SELECTED STATISTICAL DIVISIONS
(Number of dwelling units)

Period	Private sector			Public sector			Total		
	Houses	Other residential buildings	Total	Houses	Other residential buildings	Total	Houses	Other residential buildings	Total
SYDNEY STATISTICAL DIVISION									
1991-92	10,479	6,612	17,091	600	2,275	2,875	11,079	8,887	19,966
1992-93	11,919	9,464	21,383	382	1,758	2,140	12,301	11,222	23,523
<i>1992—</i>									
November	967	655	1,622	16	25	41	983	680	1,663
December	752	749	1,501	44	60	104	796	809	1,605
<i>1993—</i>									
January	691	1,021	1,712	31	68	99	722	1,089	1,811
February	1,027	536	1,563	46	297	343	1,073	833	1,906
March	1,041	909	1,950	42	166	208	1,083	1,075	2,158
April	918	1,114	2,032	30	36	66	948	1,150	2,098
May	992	735	1,727	34	68	102	1,026	803	1,829
June	964	659	1,623	30	304	334	994	963	1,957
July	1,035	1,120	2,155	95	254	349	1,130	1,374	2,504
August	1,110	816	1,926	84	142	226	1,194	958	2,152
September	1,245	828	2,073	—	41	41	1,245	869	2,114
October	1,120	984	2,104	3	115	118	1,123	1,099	2,222
November	1,094	850	1,944	2	39	41	1,096	889	1,985

TABLE 2. DWELLING UNITS COMMENCED IN SELECTED STATISTICAL DIVISIONS—continued
(Number of dwelling units)

Period	Private sector			Public sector			Total		
	Houses	Other residential buildings	Total	Houses	Other residential buildings	Total	Houses	Other residential buildings	Total
HUNTER STATISTICAL DIVISION									
1991-92	3,135	1,446	4,581	128	242	370	3,263	1,688	4,951
1992-93	3,214	1,594	4,808	69	199	268	3,283	1,793	5,076
1992—									
November	233	101	334	3	—	3	236	101	337
December	222	74	296	2	5	7	224	79	303
1993—									
January	225	105	330	17	—	17	242	105	347
February	251	71	322	11	31	42	262	102	364
March	287	160	447	11	14	25	298	174	472
April	180	125	305	6	4	10	186	129	315
May	269	133	402	6	—	6	275	133	408
June	284	170	454	4	16	20	288	186	474
July	415	180	595	14	24	38	429	204	633
August	360	138	498	8	25	33	368	163	531
September	387	163	550	4	6	10	391	169	560
October	367	191	558	3	17	20	370	208	578
November	275	113	388	—	—	—	275	113	388
ILLAWARRA STATISTICAL DIVISION									
1991-92	2,368	553	2,921	94	209	303	2,462	762	3,224
1992-93	2,310	939	3,249	26	246	272	2,336	1,185	3,521
1992—									
November	264	108	372	—	21	21	264	129	393
December	159	74	233	—	—	—	159	74	233
1993—									
January	162	66	228	3	—	3	165	66	231
February	208	102	310	9	35	44	217	137	354
March	119	78	197	2	37	39	121	115	236
April	179	43	222	—	—	—	179	43	222
May	204	109	313	—	—	—	204	109	313
June	189	52	241	12	—	12	201	52	253
July	211	62	273	28	27	55	239	89	328
August	207	98	305	1	23	24	208	121	329
September	329	66	395	—	—	—	329	66	395
October	223	92	315	—	—	—	223	92	315
November	218	90	308	1	—	1	219	90	309
BALANCE OF NEW SOUTH WALES									
1991-92	9,201	2,792	11,993	211	312	523	9,412	3,104	12,516
1992-93	8,996	2,674	11,670	262	497	759	9,258	3,171	12,429
1992—									
November	805	247	1,052	9	8	17	814	255	1,069
December	620	185	805	13	4	17	633	189	822
1993—									
January	655	171	826	13	36	49	668	207	875
February	638	190	828	23	25	48	661	215	876
March	790	241	1,031	29	58	87	819	299	1,118
April	674	138	812	14	18	32	688	156	844
May	763	245	1,008	49	77	126	812	322	1,134
June	745	324	1,069	30	79	109	775	403	1,178
July	749	230	979	52	119	171	801	349	1,150
August	824	317	1,141	28	47	75	852	364	1,216
September	857	289	1,146	—	2	2	857	291	1,148
October	756	170	926	11	2	13	767	172	939
November	841	215	1,056	19	—	19	860	215	1,075

TABLE 3. HOUSES COMMENCED, BY MATERIAL OF OUTER WALLS, NSW

Period	Double brick (a)	Brick veneer	Fibre cement	Timber	Other and not stated	Total
PRIVATE SECTOR						
1991-92	3,116	18,747	1,239	1,757	324	25,183
1992-93	3,203	19,857	1,133	1,763	483	26,439
1992—						
November	253	1,735	105	146	30	2,269
December	235	1,274	79	132	33	1,753
1993—						
January	228	1,256	82	134	33	1,733
February	210	1,663	65	147	39	2,124
March	291	1,665	101	150	30	2,237
April	264	1,424	101	124	38	1,951
May	328	1,590	94	149	67	2,228
June	344	1,512	86	155	85	2,182
July	313	1,698	91	192	116	2,410
August	365	1,723	97	192	124	2,501
September	347	2,114	115	168	74	2,818
October	327	1,796	96	186	61	2,466
November	303	1,817	101	148	59	2,428
PUBLIC SECTOR						
1991-92	20	991	9	2	11	1,033
1992-93	67	658	9	2	3	739
1992—						
November	2	26	—	—	—	28
December	9	49	—	—	1	59
1993—						
January	1	63	—	—	—	64
February	1	88	—	—	—	89
March	2	82	—	—	—	84
April	11	39	—	—	—	50
May	15	73	—	—	1	89
June	11	59	5	—	1	76
July	29	137	1	2	20	189
August	21	98	—	—	2	121
September	—	4	—	—	—	4
October	1	16	—	—	—	17
November	7	15	—	—	—	22
TOTAL						
1991-92	3,136	19,738	1,248	1,759	335	26,216
1992-93	3,270	20,515	1,142	1,765	486	27,178
1992—						
November	255	1,761	105	146	30	2,297
December	244	1,323	79	132	34	1,812
1993—						
January	229	1,319	82	134	33	1,797
February	211	1,751	65	147	39	2,213
March	293	1,747	101	150	30	2,321
April	275	1,463	101	124	38	2,001
May	343	1,663	94	149	68	2,317
June	355	1,571	91	155	86	2,258
July	342	1,835	92	194	136	2,599
August	386	1,821	97	192	126	2,622
September	347	2,118	115	168	74	2,822
October	328	1,812	96	186	61	2,483
November	310	1,832	101	148	59	2,450

(a) Includes house constructed with outer walls of stone or concrete.

TABLE 4. HOUSES COMMENCED IN STATISTICAL DIVISIONS

Statistical division	October 1993						November 1993					
	Double brick (a)	Brick veneer	Fibre cement	Timber	Other and not stated	Total	Double brick (a)	Brick veneer	Fibre cement	Timber	Other and not stated	Total
PRIVATE SECTOR												
Sydney	124	913	22	45	17	1,121	97	924	11	43	19	1,094
Hunter	60	248	14	36	9	367	37	191	19	26	2	275
Illawarra	20	172	8	19	4	223	8	186	10	12	2	218
Richmond-Tweed	8	119	1	20	4	152	4	83	4	5	3	99
Mid-North Coast	26	105	6	19	8	164	32	136	5	8	6	187
Northern	27	37	10	10	—	84	11	20	8	8	4	51
North Western	4	21	2	3	—	30	2	60	7	5	—	74
Central West	22	23	9	7	1	62	63	20	11	4	5	103
South Eastern	25	70	12	21	7	135	37	84	16	27	10	174
Murrumbidgee	7	62	11	3	10	93	4	57	6	1	7	75
Murray	4	26	1	1	1	33	8	56	3	9	—	76
Far West	—	—	—	—	—	—	—	—	1	—	1	2
New South Wales	327	1,796	96	184	61	2,464	303	1,817	101	148	59	2,428
PUBLIC SECTOR												
Sydney	—	3	—	—	—	3	1	1	—	—	—	2
Hunter	—	3	—	—	—	3	—	—	—	—	—	—
Illawarra	—	—	—	—	—	—	—	1	—	—	—	1
Richmond-Tweed	—	—	—	—	—	—	—	—	—	—	—	—
Mid-North Coast	—	—	—	—	—	—	—	2	—	—	—	2
Northern	—	—	—	—	—	—	3	—	—	—	—	3
North Western	—	—	—	—	—	—	—	—	—	—	—	—
Central West	—	—	—	—	—	—	3	—	—	—	—	3
South Eastern	1	—	—	—	—	1	—	—	—	—	—	—
Murrumbidgee	—	10	—	—	—	10	—	11	—	—	—	11
Murray	—	—	—	—	—	—	—	—	—	—	—	—
Far West	—	—	—	—	—	—	—	—	—	—	—	—
New South Wales	1	16	—	—	—	17	7	15	—	—	—	22
TOTAL												
Sydney	124	916	22	45	17	1,124	98	925	11	43	19	1,096
Hunter	60	251	14	36	9	370	37	191	19	26	2	275
Illawarra	20	172	8	19	4	223	8	187	10	12	2	219
Richmond-Tweed	8	119	1	20	4	152	4	83	4	5	3	99
Mid-North Coast	26	105	6	19	8	164	32	138	5	8	6	189
Northern	27	37	10	10	—	84	14	20	8	8	4	54
North Western	4	21	2	3	—	30	2	60	7	5	—	74
Central West	22	23	9	7	1	62	66	20	11	4	5	106
South Eastern	26	70	12	21	7	136	37	84	16	27	10	174
Murrumbidgee	7	72	11	3	10	103	4	68	6	1	7	86
Murray	4	26	1	1	1	33	8	56	3	9	—	76
Far West	—	—	—	—	—	—	—	—	1	—	1	2
New South Wales	328	1,812	96	184	61	2,481	310	1,832	101	148	59	2,450

(a) Includes houses constructed with outer walls of stone or concrete.

**TABLE 5. NEW DWELLING UNITS COMMENCED IN OTHER RESIDENTIAL BUILDINGS, BY TYPE IN STATISTICAL DIVISIONS
NOVEMBER 1993**

Statistical division	Semi-detached, row or terrace houses, townhouses, etc. of			Flats, units or apartments in a building of			Unknown or not stated	Total	
	1 storey	2 or more storeys	Total	1-2 storeys	3 storeys	4 or more storeys			Total
NUMBER									
Sydney	414	152	566	182	72	62	316	7	889
Hunter	87	—	87	26	—	—	26	—	113
Illawarra	58	17	75	15	—	—	15	—	90
Richmond-Tweed	18	—	18	14	9	—	23	3	44
Mid-North Coast	18	—	18	9	—	—	9	—	27
Northern	4	—	4	3	—	—	3	—	7
North Western	20	—	20	8	—	—	8	—	28
Central West	18	—	18	8	—	—	8	—	26
South Eastern	32	5	37	22	—	—	22	—	59
Murrumbidgee	9	—	9	13	—	—	13	—	22
Murray	—	—	—	2	—	—	2	—	2
Far West	—	—	—	—	—	—	—	—	—
New South Wales	678	174	852	302	81	62	445	10	1,307
VALUE (\$'000)									
Sydney	30,214	13,832	44,046	13,899	4,835	5,120	23,854	350	68,250
Hunter	4,881	—	4,881	1,575	—	—	1,575	—	6,456
Illawarra	4,136	1,100	5,236	900	—	—	900	—	6,136
Richmond-Tweed	1,148	—	1,148	984	500	—	1,484	200	2,832
Mid-North Coast	1,241	—	1,241	340	—	—	340	—	1,581
Northern	250	—	250	147	—	—	147	—	397
North Western	1,227	—	1,227	535	—	—	535	—	1,762
Central West	1,098	—	1,098	395	—	—	395	—	1,493
South Eastern	2,385	500	2,885	1,553	—	—	1,553	—	4,438
Murrumbidgee	640	—	640	750	—	—	750	—	1,390
Murray	—	—	—	121	—	—	121	—	121
Far West	—	—	—	—	—	—	—	—	—
New South Wales	47,219	15,432	62,651	21,199	5,335	5,120	31,654	550	94,856

NEW OTHER RESIDENTIAL DWELLING UNITS COMMENCED, NSW

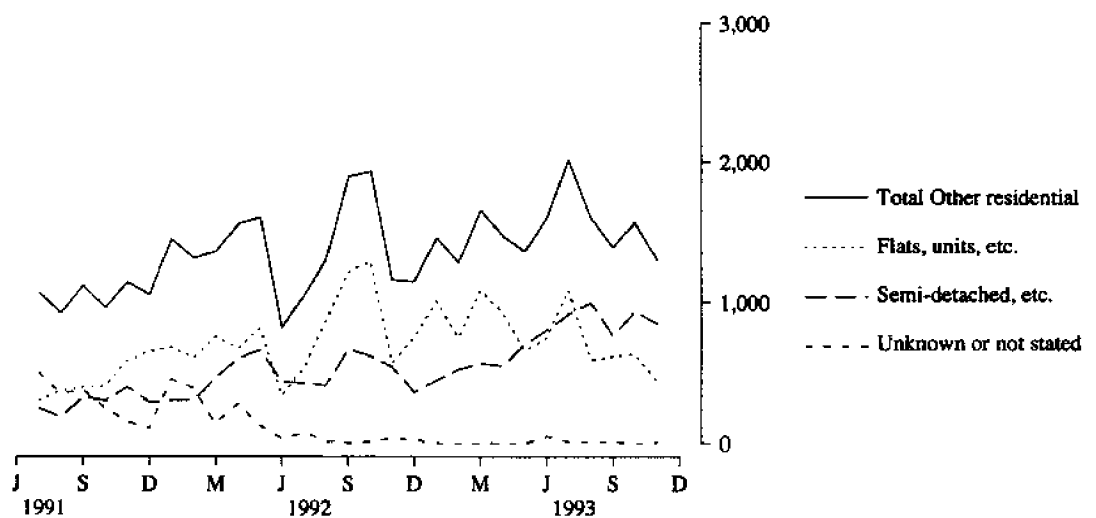


TABLE 6. DWELLING UNITS COMMENCED BY TYPE OF RESIDENTIAL BUILDING IN STATISTICAL LOCAL AREAS
(Number of dwelling units)

Statistical area	1993												Total					
	Houses						Other residential buildings											
	Jun.	Jul.	Aug.	Sep.	Oct.	Nov.	Jun.	Jul.	Aug.	Sep.	Oct.	Nov.						
SYDNEY STATISTICAL DIVISION																		
Botany (M)	1	1	1	1	1	2	—	—	65	—	—	2	1	1	66	1	1	4
Leichhardt (M)	—	3	8	4	4	5	40	2	5	2	—	2	40	5	13	6	30	7
Marrickville (M)	—	—	—	—	1	—	—	8	6	—	—	—	—	8	6	—	1	—
South Sydney (C)	1	1	—	—	1	—	37	169	—	3	2	3	38	170	—	3	3	3
Sydney (C)—Inner and Remainder	—	—	—	—	—	—	—	94	38	74	—	—	—	94	38	74	—	—
Inner Sydney SSD	2	5	9	5	7	7	77	273	114	79	28	7	79	278	123	84	35	14
Randwick (M)	16	19	21	8	—	16	13	6	51	6	18	67	29	25	72	14	18	83
Waverley (M)	1	2	—	1	2	2	20	66	12	9	—	—	21	68	12	10	2	2
Woolahra (M)	3	1	3	2	3	3	—	—	—	—	134	—	3	1	3	2	137	3
Eastern Suburbs SSD	20	22	24	11	5	21	33	72	63	15	152	67	53	94	87	26	157	88
Hurstville (C)	3	2	14	12	23	3	39	—	24	37	2	—	42	2	38	49	25	3
Kogarah (M)	5	12	13	—	—	7	13	39	—	2	—	7	18	51	13	2	—	14
Rockdale (M)	6	12	9	4	8	9	—	18	14	3	6	9	6	30	23	7	14	18
Sutherland (S)	51	101	49	67	48	70	116	217	37	33	73	72	167	318	86	100	121	142
St George-Sutherland SSD	65	127	85	83	79	89	168	274	75	75	81	88	233	401	160	158	160	177
Bankstown (C)	48	60	40	29	19	17	66	66	12	58	60	55	114	126	52	87	79	72
Canterbury (M)	1	1	5	6	8	13	8	—	26	19	27	34	9	1	31	25	35	47
Canterbury-Bankstown SSD	49	61	45	35	27	30	74	66	38	77	87	89	123	127	83	112	114	119
Fairfield (C)	34	52	32	62	36	30	15	50	58	26	7	38	49	102	90	88	43	68
Liverpool (C)	26	32	71	62	221	69	12	9	34	21	75	48	38	41	105	83	296	117
Fairfield-Liverpool SSD	60	84	103	124	257	99	27	59	92	47	82	86	87	143	195	171	339	185
Camden (M)	75	52	45	65	35	67	2	8	4	—	8	2	77	60	49	65	43	69
Campbelltown (C)	43	49	70	73	84	102	43	16	39	15	17	26	86	65	109	88	101	128
Wollondilly (S)	20	23	34	24	23	13	—	—	4	—	2	—	20	23	38	24	25	13
Outer South Western Sydney SSD	138	124	149	162	142	182	45	24	47	15	27	28	183	148	196	177	169	210
Ashfield (M)	3	—	—	1	—	—	3	—	—	—	—	—	6	—	—	1	—	—
Burwood (M)	3	15	—	2	4	4	—	—	—	—	—	—	3	15	—	—	4	4
Concord (M)	2	—	4	3	2	3	—	39	8	16	—	12	2	39	12	19	2	15
Drumoyne (M)	6	1	2	—	4	—	—	2	2	—	6	—	6	3	4	—	10	—
Strathfield (M)	5	4	—	—	12	8	9	2	26	—	—	2	14	6	26	—	12	10
Inner Western Sydney SSD	19	20	6	6	22	15	12	43	36	16	6	14	31	63	42	22	28	29

TABLE 6. DWELLING UNITS COMMENCED BY TYPE OF RESIDENTIAL BUILDING IN STATISTICAL LOCAL AREAS—continued
(Number of dwelling units)

Statistical area	Houses											Other residential buildings											Total																
	1993																																						
	Jun.	Jul.	Aug.	Sep.	Oct.	Nov.	Jun.	Jul.	Aug.	Sep.	Oct.	Nov.	Jun.	Jul.	Aug.	Sep.	Oct.	Nov.	Jun.	Jul.	Aug.	Sep.		Oct.	Nov.														
SYDNEY STATISTICAL DIVISION—continued																																							
Auburn (M)	6	3	1	1	10	3	8	32	7	—	6	8	14	35	8	1	16	11	34	37	29	36	64	24	7	2	—	2	—	41	39	29	36	66	24				
Holroyd (M)	1	14	4	8	11	7	13	25	10	44	53	10	14	39	14	52	64	17	66	17	40	35	20	6	21	—	15	23	6	2	87	17	55	58	26	8			
Parramatta (C)	16	16	33	20	13	28	41	102	88	16	68	130	57	118	121	36	81	158	185	125	128	194	150	73	38	63	40	140	188	168	334	170	93						
Central	23	33	38	29	34	38	62	159	105	60	127	148	85	192	143	89	161	186	35	51	54	44	37	49	15	74	79	41	21	26	50	125	133	85	58	75			
Western Sydney SSD	112	133	152	220	94	148	46	65	35	55	98	70	158	187	275	192	218	147	184	206	264	131	197	61	139	114	96	119	208	323	320	360	250	293					
Blue Mountains (C)	—	6	7	4	3	4	2	—	—	—	2	2	2	6	7	4	5	6	6	Blacktown (C)	2	6	5	—	—	—	2	—	—	—	—	2	2	2	2	2	2	2	
Hawkesbury (C)	3	3	6	—	3	—	—	17	5	4	10	6	3	20	5	—	—	15	Blacktown-Baulkham Hills SSD	6	6	3	—	3	—	3	—	3	—	—	2	4	4	4	4	4	4		
Penrith (C)	4	3	1	6	3	4	9	2	31	10	13	8	13	5	11	13	13	13	Hunter's Hill (M)	3	3	3	—	3	—	—	17	5	4	10	6	3	3	3	3	3	3		
Outer Western Sydney SSD	16	17	13	7	14	12	100	8	17	26	209	24	116	25	30	33	223	36	Lane Cove (M)	5	4	8	3	6	4	21	2	7	2	4	8	26	6	6	6	6	6		
Ryde (C)	5	4	8	3	6	4	21	2	7	2	4	8	26	6	15	5	10	12	Mosman (M)	30	39	40	20	29	29	134	29	60	42	238	58	164	68	100	62	267	87		
Willoughby (C)	74	73	43	47	50	39	54	28	50	44	44	36	128	101	93	91	94	75	North Sydney (M)	11	8	13	8	9	19	8	2	—	4	4	18	19	10	13	12	13	37		
Lower Northern Sydney SSD	85	81	56	55	59	58	62	30	50	48	48	54	147	111	106	103	107	112	Ryde (C)	5	2	2	—	3	11	18	48	12	—	2	4	23	50	14	—	5	15		
Hornsby (S)	5	2	2	—	3	3	18	48	12	—	2	4	23	50	14	—	5	15	Hornsby-Ku-ring-gai SSD	14	13	11	2	17	8	8	2	2	—	2	14	22	15	13	2	19	22		
Ku-ring-gai (M)	45	27	27	18	20	25	71	6	24	6	42	26	116	33	51	24	62	51	Manly (M)	64	42	40	20	40	44	97	56	38	6	46	44	161	98	78	26	86	88		
Hornsby-Ku-ring-gai SSD	36	87	77	87	71	106	40	71	22	114	9	20	76	158	99	201	80	126	Warrigah (S)	71	96	188	150	71	108	33	16	64	39	31	70	104	112	252	189	102	178		
Manly (M)	107	183	265	237	142	214	73	87	86	153	40	90	180	270	351	390	182	304	Northern Beaches SSD	994	1,130	1,194	1,245	1,124	1,096	963	1,374	958	869	1,101	889	1,957	2,504	2,152	2,114	2,225	1,985		
Gosford (C)	994	1,130	1,194	1,245	1,124	1,096	963	1,374	958	869	1,101	889	1,957	2,504	2,152	2,114	2,225	1,985	Wyong (S)	—	—	—	—	—	—	—	—	—	—	—	—	—	—	—	—	—	—	—	
Wyong (S)	—	—	—	—	—	—	—	—	—	—	—	—	—	—	—	—	—	—	—	Gosford-Wyong SSD	—	—	—	—	—	—	—	—	—	—	—	—	—	—	—	—	—	—	—
Gosford-Wyong SSD	—	—	—	—	—	—	—	—	—	—	—	—	—	—	—	—	—	—	—	SYDNEY SD	—	—	—	—	—	—	—	—	—	—	—	—	—	—	—	—	—	—	—

TABLE 6. DWELLING UNITS COMMENCED BY TYPE OF RESIDENTIAL BUILDING IN STATISTICAL LOCAL AREAS—continued
(Number of dwelling units)

Houses

Other residential buildings

Total

1993

Statistical area	1993												
	Jun.	Jul.	Aug.	Sep.	Oct.	Nov.	Jun.	Jul.	Aug.	Sep.	Oct.	Nov.	Dec.
HUNTER STATISTICAL DIVISION													
Cessnock (C)	9	10	9	4	12	9	2	—	2	—	2	—	—
Lake Macquarie (C)	121	151	170	155	203	106	76	68	86	42	132	51	11
Maitland (C)	60	32	35	25	45	42	6	18	10	8	10	29	45
Newcastle (C)—Inner and Remainder	26	35	14	29	14	2	69	46	18	19	10	2	32
Port Stephens (S)	39	19	80	104	35	29	13	8	12	70	4	14	92
Newcastle SSD	255	247	308	317	309	188	166	140	128	139	158	96	436
Dungog (S)	5	5	7	7	2	7	—	—	—	—	—	—	7
Gloucester (S)	1	3	1	2	1	6	—	—	—	—	—	—	1
Great Lakes (S)	1	147	21	14	22	24	16	56	29	22	21	9	50
Merrriwa (S)	—	—	—	1	—	2	—	—	—	—	—	—	—
Murrurundi (S)	1	3	2	2	1	3	—	—	—	—	—	—	2
Muswellbrook (S)	6	11	12	7	5	11	2	4	2	—	4	—	14
Stone (S)	—	—	6	14	18	19	—	—	2	2	2	8	8
Singleton (S)	19	13	11	27	12	15	2	4	2	6	23	—	13
Hunter SD Balance SSD	33	182	60	74	61	87	20	64	35	30	50	17	95
HUNTER SD	288	429	368	391	370	275	186	204	163	169	208	113	633
ILLAWARRA STATISTICAL DIVISION													
Kiama (M)	5	13	10	12	18	14	4	2	5	—	6	10	15
Shellharbour (M)	63	85	49	42	27	54	7	15	39	10	26	25	88
Wollongong (C)	40	47	47	57	34	85	39	18	26	21	18	30	73
Wollongong SSD	108	145	106	111	79	153	50	35	70	31	50	65	180
Shoalhaven (C)	65	76	74	195	100	45	2	37	51	31	32	11	125
Wingecarribee (S)	28	18	28	23	44	21	—	17	—	4	10	14	28
Illawarra SD Balance SSD	93	94	102	218	144	66	2	54	51	35	42	25	153
ILLAWARRA SD	201	239	208	329	223	219	52	89	121	66	92	90	328
Total	489	668	576	720	594	494	238	293	324	205	299	203	961

TABLE 6. DWELLING UNITS COMMENCED BY TYPE OF RESIDENTIAL BUILDING IN STATISTICAL LOCAL AREAS—continued
(Number of dwelling units)

Statistical area	Houses											Other residential buildings											Total
	1993																						
	Jun.	Jul.	Aug.	Sep.	Oct.	Nov.	Jun.	Jul.	Aug.	Sep.	Oct.	Nov.	Jun.	Jul.	Aug.	Sep.	Oct.	Nov.					
RICHMOND-TWEED STATISTICAL DIVISION																							
Tweed (S) Pt A	45	29	30	41	55	31	105	16	38	28	15	19	150	45	68	69	70	50					
Tweed Heads SSD	45	29	30	41	55	31	105	16	38	28	15	19	150	45	68	69	70	50					
Ballina (S)	25	27	33	32	24	17	18	45	22	19	17	12	43	72	55	51	41	29					
Byron (S)	26	37	36	40	20	—	2	9	20	71	4	—	28	46	56	111	24	—					
Casino (M)	14	5	6	6	5	11	6	—	6	—	—	2	20	5	12	6	5	13					
Kyogle (S)	5	1	1	—	13	6	—	—	—	—	3	—	5	1	1	—	16	6					
Lismore (C)	10	37	23	30	10	15	33	6	12	17	9	7	43	43	35	47	19	22					
Richmond River (S)	6	16	13	13	10	5	—	—	4	—	—	—	6	16	17	13	10	5					
Tweed (S) Pt B	35	13	30	18	15	14	20	4	10	12	10	4	55	17	40	30	25	18					
Richmond-Tweed SD Balance SSD	121	136	142	139	97	68	79	64	74	119	43	25	200	200	216	258	140	93					
RICHMOND-TWEED SD	166	165	172	180	152	99	184	80	112	147	58	44	350	245	284	327	210	143					
MID-NORTH COAST STATISTICAL DIVISION																							
Bellingen (S)	7	5	8	13	8	5	—	—	—	—	2	—	7	5	8	13	10	5					
Coffs Harbour (C)	57	54	56	62	42	50	21	6	26	14	18	6	78	60	82	76	60	56					
Copmanhurst (S)	3	—	1	1	1	—	—	—	—	—	—	—	3	—	1	1	1	—					
Grafton (C)	1	7	3	6	3	7	7	2	11	17	3	3	8	9	14	23	6	10					
Maclean (S)	22	17	25	10	15	5	12	10	2	8	2	8	34	27	27	18	17	13					
Nambucca (S)	8	10	12	17	11	5	2	6	2	2	—	—	10	16	14	19	11	5					
Nymboida (S)	3	2	2	6	8	9	—	—	—	—	—	—	3	2	2	6	8	9					
Ullmarra (S)	11	7	4	6	6	7	—	—	—	—	—	—	11	7	4	6	6	7					
Clarence SSD	112	102	111	121	94	88	42	24	41	41	25	17	154	126	152	162	119	105					
Greater Taree (C)	14	18	30	15	28	20	28	19	27	6	11	4	42	37	57	21	39	24					
Hastings (M)	4	5	9	56	39	71	4	4	15	12	2	4	8	9	24	68	41	75					
Kempsey (S)	18	30	15	16	3	10	10	4	—	3	—	2	28	34	15	19	3	12					
Hastings SSD	36	53	54	87	70	101	42	27	42	21	13	10	78	80	96	108	83	111					
MID-NORTH COAST SD	148	155	165	208	164	189	84	51	83	62	38	27	232	206	248	270	202	216					

TABLE 6. DWELLING UNITS COMMENCED BY TYPE OF RESIDENTIAL BUILDING IN STATISTICAL LOCAL AREAS—continued
(Number of dwelling units)

Statistical area	Houses												Total						
	Other residential buildings																		
	1993	1993	1993	1993	1993	1993	1993	1993	1993	1993	1993	1993							
	Jun.	Jul.	Aug.	Sep.	Oct.	Nov.	Jun.	Jul.	Aug.	Sep.	Oct.	Nov.	Jun.	Jul.	Aug.	Sep.	Oct.	Nov.	
NORTHERN STATISTICAL DIVISION																			
Barraba (S)	—	3	—	—	—	—	—	—	—	—	—	—	—	—	—	—	—	—	—
Bingara (S)	—	4	—	—	—	—	—	—	—	—	—	—	—	—	—	—	—	—	—
Gunnedah (S)	5	3	8	3	5	3	2	—	—	—	—	—	7	4	8	3	9	3	3
Inverell (S) Pt A	2	3	5	5	1	3	—	—	—	—	4	—	2	3	5	5	1	3	3
Manilla (S)	1	2	—	—	5	3	—	—	—	—	—	—	1	2	—	—	5	3	3
Nundillo (S)	2	1	—	4	1	4	—	—	—	—	—	—	2	1	—	4	1	4	4
Parry (S)	4	7	7	7	16	11	—	—	—	—	—	—	4	7	7	7	16	11	11
Quirindi (S)	1	—	1	—	—	3	—	4	—	—	—	—	1	4	1	—	1	3	3
Tamworth (C)	8	13	19	10	13	6	9	10	8	—	7	4	17	23	27	10	20	10	10
Yallaroi (S)	1	2	1	—	3	—	—	—	—	—	—	—	1	2	1	—	3	3	—
Northern Slopes SSD	24	35	41	29	48	33	11	14	8	—	11	4	35	49	49	29	59	37	37
Armidale (C)	4	7	12	18	14	—	4	6	5	4	—	—	8	13	17	22	14	—	—
Dumaresq (S)	1	2	2	2	2	2	—	—	—	—	—	—	1	2	2	2	2	2	2
Glen Innes (M)	1	3	—	3	3	5	—	—	2	—	—	—	1	3	2	3	3	5	5
Guyra (S)	3	1	—	2	—	1	—	—	—	—	—	—	3	1	—	2	—	1	1
Inverell (S) Pt B	3	5	4	5	7	5	2	2	2	4	—	—	5	7	6	9	7	5	5
Severn (S)	2	2	2	—	1	2	—	—	—	—	—	—	2	2	2	—	1	2	2
Tenterfield (S)	9	1	12	6	2	3	—	—	—	—	—	—	9	1	12	6	2	3	3
Uralla (S)	—	4	—	2	2	1	—	—	—	—	—	—	—	4	—	2	6	4	4
Walcha (S)	3	1	3	—	—	—	—	—	—	—	—	—	3	1	3	—	—	—	—
Northern Tablelands SSD	26	26	35	38	31	19	6	8	9	8	4	3	32	34	44	46	35	—	22
Moree Plains (S)	6	8	4	3	3	2	—	—	—	3	—	—	6	8	4	6	3	2	2
Narrabri (S)	2	11	5	7	2	—	3	2	—	8	2	—	5	13	5	15	4	—	—
North Central Plains SSD	8	19	9	10	5	2	3	2	—	11	2	—	11	21	9	21	7	2	2
NORTHERN SD	58	80	85	77	84	54	20	24	17	19	17	7	78	104	102	96	101	61	61

TABLE 6. DWELLING UNITS COMMENCED BY TYPE OF RESIDENTIAL BUILDING IN STATISTICAL LOCAL AREAS—continued
(Number of dwelling units)

Statistical area	Houses												Other residential buildings												Total											
	1993																																			
	Jun.	Jul.	Aug.	Sep.	Oct.	Nov.	Jun.	Jul.	Aug.	Sep.	Oct.	Nov.	Jun.	Jul.	Aug.	Sep.	Oct.	Nov.	Jun.	Jul.	Aug.	Sep.	Oct.	Nov.												
NORTH WESTERN STATISTICAL DIVISION																																				
Coolah (S)	2	2	3	1	—	2	—	—	—	—	—	—	—	—	—	—	—	—	—	—	—	—	—	—												
Coonabarabran (S)	7	2	1	6	2	2	—	—	—	—	—	—	—	—	—	—	—	—	—	—	—	—	—	—												
Dubbo (C)	26	28	29	16	8	50	2	4	13	2	14	28	32	42	18	14	28	18	42	32	18	10	64													
Gulgandra (S)	1	8	3	1	1	3	—	—	—	—	—	—	—	—	—	—	—	—	—	—	—	—	—													
Mudgee (S)	6	11	9	8	9	8	—	4	4	—	—	6	15	13	8	—	6	8	13	15	8	9	8													
Narromine (S)	4	7	3	7	3	2	—	—	—	—	—	4	7	3	7	—	4	7	3	7	3	3	2													
Wellington (S)	6	1	1	1	2	4	—	9	—	—	—	6	10	1	—	—	6	10	1	—	—	2	4													
Central Macquarie SSD	52	59	49	40	25	71	2	17	17	2	28	54	76	66	42	28	54	66	76	66	42	29	99													
Bogan (S)	4	—	5	—	2	—	4	—	2	—	—	8	—	7	—	—	8	—	7	—	—	2	—													
Coonamble (S)	1	—	3	2	2	1	—	—	—	—	—	1	—	3	—	—	1	—	3	—	2	2	1													
Walgett (S)	1	2	8	3	1	2	—	—	—	—	—	1	2	8	3	—	1	2	8	2	3	1	2													
Warren (S)	1	1	1	—	—	—	—	—	—	—	—	—	—	—	—	—	—	—	—	—	—	—	—													
Macquarie-Barwon SSD	7	3	17	5	5	3	4	—	2	—	—	11	3	19	5	—	11	3	19	3	5	—	3													
Bourke (S)	2	—	—	—	—	—	—	—	—	—	—	2	—	2	—	—	2	—	2	—	—	—	—													
Brewarrina (S)	—	—	1	—	—	—	—	2	—	—	—	—	—	2	—	—	—	—	2	—	2	—	—													
Cobar (S)	—	2	—	1	—	—	—	—	—	—	—	—	—	—	—	—	—	—	—	—	—	—	—													
Upper Darling SSD	2	2	1	1	—	—	—	2	2	—	—	—	2	2	—	—	—	2	2	2	—	—	—													
NORTH WESTERN SD	61	64	67	46	30	74	6	19	21	4	28	67	83	88	50	34	67	88	83	50	34	102														

TABLE 6. DWELLING UNITS COMMENCED BY TYPE OF RESIDENTIAL BUILDING IN STATISTICAL LOCAL AREAS—continued
(Number of dwelling units)

Statistical area	Houses												Other residential buildings												Total
	1993																								
	Jun.	Jul.	Aug.	Sep.	Oct.	Nov.	Jun.	Jul.	Aug.	Sep.	Oct.	Nov.	Jun.	Jul.	Aug.	Sep.	Oct.	Nov.							
CENTRAL WEST STATISTICAL DIVISION																									
Badhurst (C)	14	10	12	4	9	51	10	29	—	2	2	22	24	39	12	6	11	73							
Blayney (S) Pt A	1	2	—	1	2	1	—	—	—	—	—	—	1	2	—	1	2	1							
Cabonne (S) Pt A	—	2	2	2	2	1	—	—	—	—	—	—	—	2	2	2	2	1							
Evans (S) Pt A	1	1	—	1	—	3	—	—	—	—	—	—	1	1	—	1	—	3							
Orange (C)	4	25	11	7	10	—	8	28	—	—	—	—	12	53	11	7	10	—							
Badhurst-Orange SSD	20	40	25	15	23	56	18	57	—	2	2	22	38	97	25	17	25	78							
Blayney (S) Pt B	1	3	2	—	—	—	—	—	—	—	—	—	1	3	2	—	—	—							
Cabonne (S) Pt B	3	4	1	—	2	—	—	—	—	—	—	—	3	4	1	—	2	—							
Evans (S) Pt B	1	2	3	2	4	2	—	—	—	—	—	—	1	2	3	2	4	2							
Greater Lithgow (C)	8	3	19	7	6	8	—	—	—	—	—	—	8	3	19	7	6	8							
Oberon (S)	3	2	4	3	8	—	—	—	—	—	—	—	3	2	6	3	8	—							
Rylstone (S)	1	—	—	1	—	—	—	—	—	—	—	—	1	—	—	1	—	—							
Central Tablelands (excl. Badhurst-Orange) SSD	17	14	29	13	20	10	—	—	2	—	—	—	17	14	31	13	20	10							
Bland (S)	3	1	—	1	2	—	—	—	—	—	—	—	3	1	—	1	2	—							
Cabonne (S) Pt C	4	6	8	4	4	—	—	—	—	—	—	—	4	6	8	4	4	—							
Cowra (S)	5	6	7	6	6	11	3	—	—	—	—	—	8	6	7	6	6	11							
Forbes (S)	—	9	5	3	1	2	2	—	—	—	—	—	2	9	5	3	5	2							
Lachlan (S)	6	5	1	1	4	2	—	—	—	—	—	—	6	5	1	1	4	2							
Parkes (S)	2	1	—	—	—	24	—	—	—	—	—	—	2	1	—	—	—	28							
Weddin (S)	2	2	1	—	2	1	—	—	—	—	—	—	2	2	1	—	2	1							
Lachlan SSD	22	30	22	15	19	40	5	—	—	—	—	4	27	30	22	15	23	44							
CENTRAL WEST SD	59	84	76	43	62	106	23	57	2	2	6	26	82	141	78	45	68	132							

TABLE 6. DWELLING UNITS COMMENCED BY TYPE OF RESIDENTIAL BUILDING IN STATISTICAL LOCAL AREAS—continued
(Number of dwelling units)

Statistical area	Houses												Other residential buildings												Total
	1993												1993												
	Jun.	Jul.	Aug.	Sep.	Oct.	Nov.	Jun.	Jul.	Aug.	Sep.	Oct.	Nov.	Jun.	Jul.	Aug.	Sep.	Oct.	Nov.							
Queanbeyan (C)	6	19	15	12	39	45	4	8	2	7	16	33	10	27	17	19	55	78							
Queanbeyan SSD	6	19	15	12	39	45	4	8	2	7	16	33	10	27	17	19	55	78							
Boorowa (S)	1	1	2	—	1	2	—	—	—	—	—	—	1	1	2	—	1	2							
Crookwell (S)	1	5	2	—	3	1	—	—	—	—	—	—	1	5	2	—	3	1							
Goulburn (C)	8	4	8	8	5	6	7	—	—	—	—	5	15	4	8	8	5	11							
Gunning (S)	2	1	5	2	—	11	—	2	—	—	—	—	2	3	5	2	—	11							
Harden (S)	2	6	2	1	3	1	—	—	—	—	—	—	2	6	2	1	3	1							
Mulwaece (S)	7	5	8	8	9	4	—	—	—	—	—	2	7	5	8	8	9	6							
Tallaganda (S)	2	4	2	1	—	—	—	—	2	—	—	—	2	4	4	1	—	—							
Yarrowlumla (S)	25	24	30	2	9	9	—	—	—	—	—	—	25	24	30	2	9	9							
Yass (S)	—	16	15	8	—	—	—	—	—	—	—	—	—	16	15	8	—	—							
Young (S)	9	6	5	8	2	9	10	—	6	—	—	6	19	6	11	8	2	15							
<i>Southern Tablelands</i> (excl. Queanbeyan) SSD	57	72	79	38	32	43	17	2	8	—	—	13	74	74	87	38	32	56							
Bega Valley (S)	22	45	45	29	32	37	6	47	47	2	4	5	28	92	92	31	36	42							
Eurobodalla (S)	111	13	30	97	25	23	29	34	2	32	2	—	140	47	32	129	27	23							
Lower South Coast SSD	133	58	75	126	57	60	35	81	49	34	6	5	168	139	124	160	63	65							
Bombala (S)	—	—	3	2	1	1	—	—	—	—	4	—	—	—	3	2	5	1							
Cooma-Monaro (S)	8	1	7	5	2	3	—	—	—	—	—	—	8	1	7	5	2	3							
Snowy River (S)	—	—	4	4	5	22	—	—	2	2	—	8	—	—	6	6	5	30							
Snowy SSD	8	1	14	11	8	26	—	—	2	2	4	8	8	1	16	13	12	34							
SOUTHEASTERN SD	204	150	183	187	136	174	56	91	61	43	26	59	260	241	244	230	162	233							

TABLE 6. DWELLING UNITS COMMENCED BY TYPE OF RESIDENTIAL BUILDING IN STATISTICAL LOCAL AREAS—continued
(Number of dwelling units)

Statistical area	Houses												Total					
	Jun.	Jul.	Aug.	Sep.	Oct.	Nov.	Jun.	Jul.	Aug.	Sep.	Oct.	Nov.						
Other residential buildings																		
1993																		
MURRUMBIDGEE STATISTICAL DIVISION																		
Coolamon (S)	2	2	—	3	1	—	—	—	2	—	—	—	—	2	2	3	1	—
Cootamundra (S)	—	2	3	3	—	4	—	—	—	—	—	—	—	—	3	—	4	—
Gundagai (S)	2	1	1	1	2	2	—	—	—	—	—	—	—	2	1	2	2	—
Junece (S)	—	2	1	1	6	1	—	3	—	—	—	—	—	—	5	1	1	1
Lockhart (S)	—	1	1	—	—	2	—	—	—	—	—	—	—	—	1	—	—	2
Narrandera (S)	1	5	2	3	3	1	—	—	—	—	—	—	—	1	5	2	3	1
Temora (S)	—	1	—	—	3	—	—	3	6	—	—	—	—	—	4	—	3	—
Tumut (S)	—	—	—	8	12	9	—	—	—	—	13	—	—	—	—	—	8	12
Wagga Wagga (C)	6	5	24	44	67	52	3	—	5	6	12	5	9	5	29	50	79	57
Central Murrumbidgee SSD	11	19	31	63	94	71	3	6	13	6	12	18	14	25	44	69	106	89
Carrathool (S)	—	—	1	—	—	1	—	—	—	—	—	—	—	—	1	—	—	1
Griffith (C)	4	8	8	7	4	11	8	—	12	—	4	4	12	8	20	7	8	15
Hay (S)	2	2	1	—	—	—	—	—	—	—	—	—	2	2	1	—	—	—
Leeton (S)	3	4	2	2	4	1	2	—	6	4	2	—	5	4	8	6	6	1
Murrumbidgee (S)	2	2	1	1	1	2	—	—	—	—	—	—	2	2	1	1	1	2
Lower Murrumbidgee SSD	11	16	13	10	9	15	10	—	18	4	6	4	21	16	31	14	15	19
MURRUMBIDGEE SD	22	35	44	73	103	86	13	6	31	10	18	22	35	41	75	83	121	108

TABLE 6. DWELLING UNITS COMMENCED BY TYPE OF RESIDENTIAL BUILDING IN STATISTICAL LOCAL AREAS—continued
(Number of dwelling units)

Statistical area	Houses												Other residential buildings												Total
	1993																								
	Jun.	Jul.	Aug.	Sep.	Oct.	Nov.	Jun.	Jul.	Aug.	Sep.	Oct.	Nov.	Jun.	Jul.	Aug.	Sep.	Oct.	Nov.							
	MURRAY STATISTICAL DIVISION																								
Albury (C)	29	27	25	21	13	36	8	5	37	4	2	—	37	32	62	25	15	36							
Hume (S)	3	5	4	6	2	3	—	—	—	—	—	—	3	5	4	6	2	3							
Albury SSD	32	32	29	27	15	39	8	5	37	4	2	—	40	37	66	31	17	39							
Corowa (S)	4	6	2	3	6	11	—	—	—	—	3	—	4	6	2	3	9	11							
Culcairn (S)	1	—	3	—	1	3	—	—	—	—	—	—	1	—	3	—	1	3							
Holbrook (S)	2	—	1	1	3	1	—	—	—	—	—	—	2	—	1	1	3	1							
Tumbarumba (S)	—	1	3	1	—	—	—	—	—	—	—	—	—	1	3	1	—	—							
Urana (S)	—	—	—	—	—	1	—	—	—	—	—	—	—	—	—	—	—	—							
Upper Murray (excl. Albury) SSD	7	7	9	5	10	16	—	—	—	—	3	—	7	7	9	5	13	16							
Berrigan (S)	7	5	6	6	3	1	—	—	—	—	—	—	7	5	6	6	3	3							
Conargo (S)	—	—	—	—	—	—	—	—	—	—	—	—	—	—	—	—	—	—							
Deniliquin (M)	2	4	3	2	—	3	5	—	—	—	—	—	7	4	3	2	—	3							
Jerilderie (S)	2	2	—	—	1	—	2	—	—	—	—	—	2	4	—	—	1	—							
Murray (S)	3	6	6	2	2	1	4	—	—	—	—	—	7	6	6	2	2	1							
Wakool (S)	—	1	2	—	—	4	—	—	—	—	—	—	—	1	2	—	—	4							
Windouran (S)	—	—	—	—	—	—	—	—	—	—	—	—	—	—	—	—	—	—							
Central Murray SSD	14	18	17	10	6	9	9	2	—	—	—	—	23	20	17	10	6	11							
Balranald (S)	—	5	2	1	—	2	—	—	—	—	—	—	—	5	2	1	—	2							
Wentworth (S)	1	4	2	—	2	10	—	—	—	—	—	—	1	4	2	—	2	10							
Murray-Darling SSD	7	9	4	7	2	12	—	—	—	—	—	—	7	9	4	7	2	12							
MURRAY SD	54	66	59	43	33	76	17	7	37	4	5	2	71	73	96	47	38	78							
	FAR WEST STATISTICAL DIVISION																								
Broken Hill (C)	3	2	1	—	—	2	—	14	—	—	—	—	3	16	1	—	—	2							
Central Darling (S)	—	—	—	—	—	—	—	—	—	—	—	—	—	—	—	—	—	—							
Unincorp. Far West	—	—	—	—	—	—	—	—	—	—	—	—	—	—	—	—	—	—							
FAR WEST SD	3	2	1	—	—	2	—	14	—	—	—	—	3	16	1	—	—	2							
	NEW SOUTH WALES																								
NEW SOUTH WALES	2,258	2,599	2,622	2,822	2,481	2,450	1,604	2,016	1,606	1,395	1,573	1,307	3,862	4,615	4,228	4,217	4,054	3,757							

EXPLANATORY NOTES

Introduction

This publication contains monthly details of the number of new dwelling units reported by approving authorities as having commenced.

2. As from November 1990 the data have been compiled using an 'as reported' method. Previously, data were revised for up to five months as councils notified the ABS of commencements occurring before the reference month. A comparison of data compiled using the two methods showed that, while the actual numbers may vary (both on the high and the low side), the trends were very similar. It is not possible for all the previous data to be compiled under the new method, nor can future data be compiled under the old method. Therefore there is a break in series. The advantages of the new method are that there are generally no revised data and that NSW data are more comparable with similar series issued by other States. However, if there are significant reporting delays, previous monthly data will be revised.

Scope and coverage

3. The statistics were compiled from the monthly reports, provided by local and other government authorities, of commencements of new houses and new other residential buildings for which:

- (a) building permits were issued by local government authorities in areas subject to building control by those authorities;
- (b) contracts were let or day labour work was authorised by Commonwealth, State, semi-government or local government authorities; and
- (c) are valued at \$10,000 or more.

4. The number of dwelling units created by alterations and additions to existing buildings, and through the construction of new 'non-residential buildings' (i.e. buildings other than residential buildings) is not included.

Definitions

5. A *dwelling unit* is defined as a self-contained suite of rooms, including cooking and bathing facilities and intended for long-term residential use. Units (whether self-contained or not) within buildings offering institutional care (such as hospitals) or temporary accommodation (such as motels, hostels and holiday apartments) are not defined as dwelling units.

6. A *residential building* is defined as a building predominantly consisting of one or more dwelling units. Dwellings can be either houses or other residential buildings as follows:

- (a) a *house* is defined as a detached building predominantly used for long-term residential purposes and consisting of only one dwelling unit. Thus detached 'granny flats' and detached dwelling units

(such as caretakers' residences) associated with other buildings are defined as houses for the purpose of these statistics;

- (b) an *other residential building* is defined as a building which is predominantly used for long-term residential purposes and which contains (or has attached to it) more than one dwelling unit (e.g. a block of townhouses, a duplex, or an apartment building).

7. *Commencement*. For the purpose of this statistical series, a job is regarded as being commenced on the date when it is reported that:

- (a) the job is first inspected by a local government or other government authority building inspector or surveyor, whether the work is passed or not. In general, the first inspection is undertaken at the foundations or footings stage of construction; or
- (b) the job is determined as commenced by a building inspector or surveyor.

8. *Ownership*. The ownership of a residential building is classified at the time of approval as either 'private sector' or 'public sector' according to the expected ownership of the completed building.

9. Values data are derived by aggregation of the estimated completed value of building work as reported on approval documents. These estimates exclude value of land and landscaping but include site preparation. For houses, these estimates are usually a reliable indicator of the completed value of the building. However, for other residential buildings and non-residential buildings these estimates can and often do differ significantly from the completed value of the building.

10. From July 1992, an expanded functional classification of buildings based on the Dwelling Structure Classification (DSC) has been introduced by the ABS to provide more detailed information on residential building approvals.

11. The DSC has been developed by the ABS to provide a standard classification of the different types of dwelling structures (houses, flats, townhouses, etc.). The DSC will be implemented across all major collections of housing data in the ABS. The DSC has the same overall scope as the classification used in previous collections but provides more detail than previously available to reflect the current interest in medium to high density housing.

12. In particular, for Building Approvals and Dwelling Commencements, DSC allows new other residential building to be classified as follows:

- (a) Semi-detached, row or terrace houses, townhouses, etc. (dwellings having their own private grounds and no other dwellings above or below) with:

- (i) one storey; or
 - (ii) two or more storeys.
- (b) Flats, units or apartments, etc. (dwellings not having their own private grounds and usually sharing a common entrance, foyer or stairwell) in a building of:
- (i) one or two storeys;
 - (ii) three storeys; or
 - (iii) four or more storeys.

13. More details on the DSC are contained in the ABS Information Paper, *Dwelling Structure Classification* (DSC) (1296.0).

Statistical areas of New South Wales

14. This bulletin contains data presented according to the Australian Standard Geographical Classification (ASGC). Under this classification, statistical areas are defined as follows:

- (a) *Statistical Local Areas (SLAs)*. These geographical areas are in most cases either identical with, or have been aggregated to, the previously published whole or part of legal Local Government Areas (LGAs) as defined under the (State) *Local Government Act 1919* and comprising cities (C), municipalities (M) and shires (S). In other cases, they are identical to each previously published unincorporated area. In aggregate, SLAs cover the whole of the State without gaps or overlaps. In some cases legal LGAs overlap Statistical Subdivision boundaries and therefore comprise two SLAs (Part A and Part B) or three SLAs in the case of Cabonne (S) (Part A, Part B and Part C).
- (b) *Statistical Subdivisions (SSDs)*. These consist of one or more SLAs and form the intermediate size spatial unit for the presentation of regional data.
- (c) *Statistical Divisions (SDs)*. These consist of one or more Statistical Subdivisions (SSDs). Where SSDs are not shown for statistical purposes, statistical local areas are shown ordered alphabetically within statistical divisions. The divisions are designed to be relatively homogeneous regions characterised by identifiable social and economic units within the region, under the unifying influence of one or more major towns or cities.
- (d) *Statistical Districts*. To provide comparable statistics over a period of time, statistical districts have been defined around selected urban centres, with a population of 25,000 or more, experiencing urban growth beyond the legal local government area boundaries. Those districts are intended to contain the anticipated urban spread over the next 20 years. In some cases, Statistical District boundaries are identical to those of particular Statistical

Subdivisions (e.g. Newcastle SSD and Wollongong SSD included in Table 5 of this publication).

15. Further information concerning statistical areas is contained in the publication *Regional Statistics, New South Wales*, 1989 issue (1304.1) and in the publication *Australian Standard Geographical Classification* (1216.0).

General

16. For purposes of comparison over time, it should be noted that statistics of dwelling commencements are affected from month to month by large projects (such as blocks of flats) commenced in particular months, and also by the administrative arrangements of government authorities.

Comparability of statistics

17. Because of the difference in data sources, collection methodologies and timing of notification of commencements, care should be exercised in comparing quarterly data derived from monthly dwelling unit commencements statistics with the quarterly dwelling unit commencements statistics from the Building Activity Survey—published in *Building Activity, New South Wales* (8752.1).

18. Users may also wish to refer to the following building and construction publications which are available on request.

NEW SOUTH WALES

Building Approvals, New South Wales (monthly) (8731.1)

Building Activity, New South Wales (quarterly) (8752.1)

AUSTRALIA

Housing Finance for Owner Occupation, Australia (monthly) (5609.0)

Price Index of Materials Used in House Building, Six State Capital Cities and Canberra (monthly) (6408.0)

Building Approvals, Australia (monthly) (8731.0)

Building Activity, Australia (quarterly) (8752.0)

Engineering Construction Survey, Australia (quarterly) (8762.0)

Symbols and other usages

C	City
M	Municipality
r	figure or series revised since previous issue
S	Shire
SD	Statistical Division
SLA	Statistical Local Area
SSD	Statistical Subdivision
..	not applicable
—	nil or rounded to zero (including null cells)

19. Where figures have been rounded, discrepancies may occur between sums of the component items and totals.



For more information ...

The ABS publishes a wide range of statistics and other information on Australia's economic and social conditions. Details of what is available in various publications and other products can be found in the *ABS Catalogue of Publications and Products* available at all ABS Offices (see below for contact details).

Information Consultancy Service

Information tailored to special needs of clients can be obtained from the Information Consultancy Service available at ABS Offices (see Information Inquiries below for contact details).

National Dial-a-Statistic Line

0055 86 400

This number gives you 24 hour access, 365 days a year for a range of statistics.

Electronic Data Services

A wide range of ABS data are available on electronic media. Selections of most frequently requested statistics are available, updated daily, on DISCOVERY (Key *656#). The ABS PC TELESTATS service delivers major economic indicator main features ready to download into personal computers on the day of release. The PC AUSSTATS service enables on-line access to a data base of thousands of up-to-date time series. Selected datasets are also available on diskette or CD-ROM. For more details on electronic data services available, contact Information Services in any of the ABS Offices (see Information Inquiries below for contact details).

Bookshops and Subscriptions

There are over 500 titles of various publications available from ABS bookshops in all ABS Offices (see below Bookshop Sales for contact details). The ABS also provides a subscription service through which nominated publications are provided by mail on a regular basis at no additional cost (telephone Publications Subscription Service toll free on 008 02 0608 Australia wide).

Sales and Inquiries

Regional Offices	Information Inquiries	Bookshop Sales
SYDNEY	(02) 268 4611	(02) 268 4620
MELBOURNE	(03) 615 7000	(03) 615 7829
BRISBANE	(07) 222 6351	(07) 222 6350
PERTH	(09) 323 5140	(09) 323 5307
ADELAIDE	(08) 237 7100	(08) 237 7582
HOBART	(002) 205 800	(002) 205 800
CANBERRA	(06) 207 0326	(06) 207 0326
DARWIN	(089) 432 111	(089) 432 111
National Office		
ACT	(06) 252 6007	(06) 008 020 608



Information Services, ABS, GPO Box 796, Sydney NSW 2001
or any ABS office

